

The University of the Incarnate Word Emergency Evacuation Map and Procedures

Please review the University of the Incarnate Word Emergency Evacuation Map. The following map will provide faculty and staff with information of where to evacuate in the event of an evacuation. Please note, due to the nature in which the campus is laid-out, some of the evacuation points may be in close proximity to surrounding buildings and also in the same location as other evacuation points. Generally, individuals should assemble at least equidistance from the height of the building and clear from emergency response vehicles and personnel.

*****Emergency Evacuation Coordinators Wanted*****

If you are interested in becoming a volunteer for your building, please contact EHSRM below for more information.

Below are some key points in the event of a fire:

R.A.C.E stands for:

- **R**eact to the situation-find the nearest telephone and call 911. Stay calm and answer all the dispatcher's questions.
 - **A**ctivate the nearest fire alarm pull station.
 - **C**lose doors behind you as you leave the area.
 - **E**xit the building using the nearest, safe exit. **DO NOT USE ELEVATORS.**
-
- Inform your immediate supervisor if you know of anyone needing assistance.
 - Assemble to designated evacuation points.
 - Try and take a head count to make sure everyone is accounted for.
 - Wait for the *all clear* to be given from UIW Campus Police, Environmental Health Safety and Risk Management (EHSRM), or emergency response personnel.

Please note:

Should you have any questions regarding the emergency evacuation map, please contact EHSRM:

Andrew Fohn
EHS Manager

210-283-6961 or fohn@uiwtx.edu

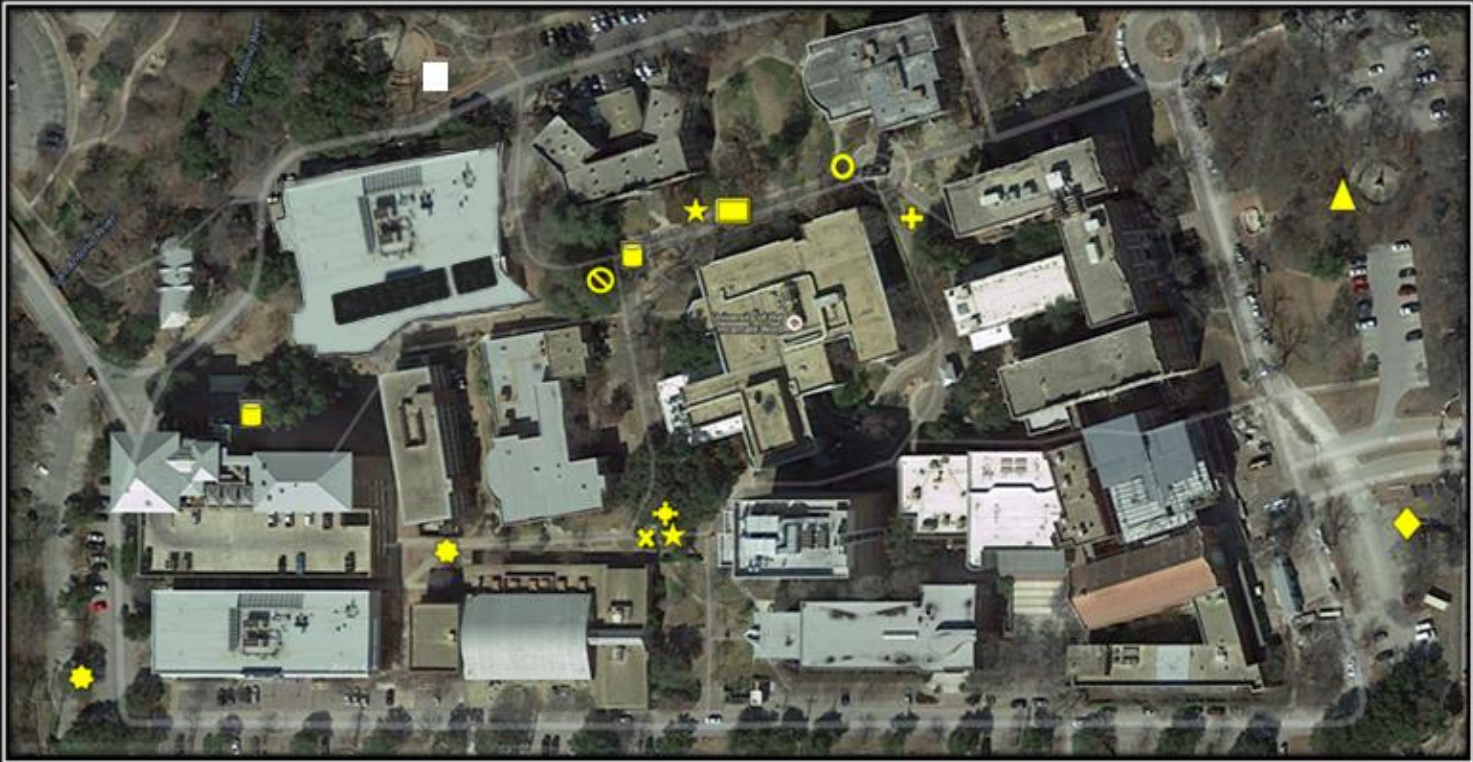
Sam McDaniel
Director, EHSRM












210-829-6035 or sgmcdani@uiwtx.edu

****When FIRE ALARM activation has occurred in your building, EXIT to assembly points marked in legend.**

****When FIRE ALARM has been silenced, DO NOT enter building. An "ALL CLEAR" announcement from UIW Campus Police, EHSRM, or emergency response personnel must be given prior to admittance into building.**

UIW BROADWAY CAMPUS



- School of Nursing 
- Agnese/Sosa 
- Student Engagement Center 
- Clement 
- Gorman 
- Wellness Center, AT&T, Bonilla 
- Arts & Music 
- Administration 
- Joyce 
- Library 
- Dubuis 

SOUTHWEST CAMPUS CORNER



Skyview +

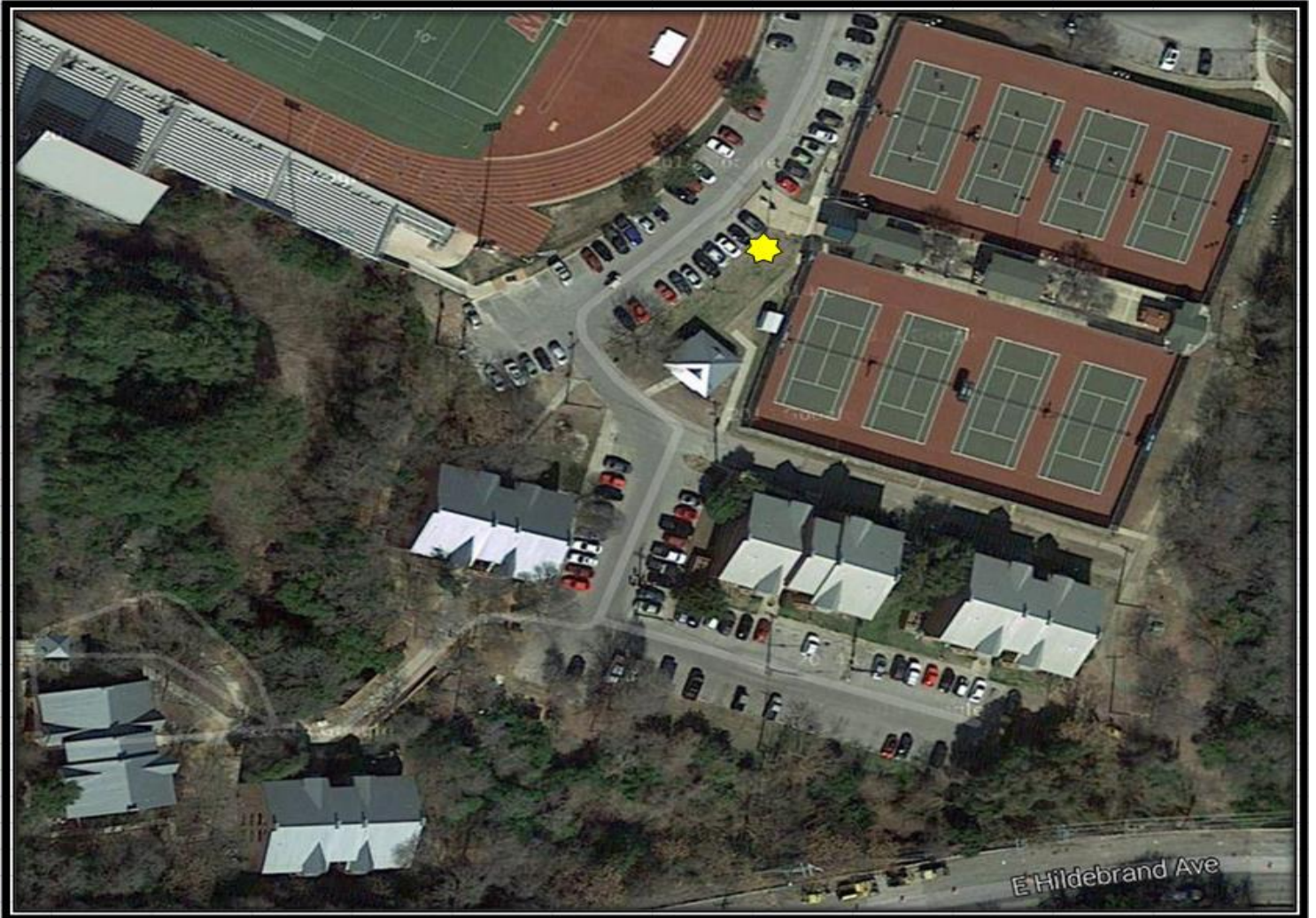
Joeris ▲


Hillside 1 X

St. Joseph's/ICC ○

McCombs ■

AVOCA RESIDENCES



Avoca A, B, C, D, E 

ATHLETICS COMPLEX



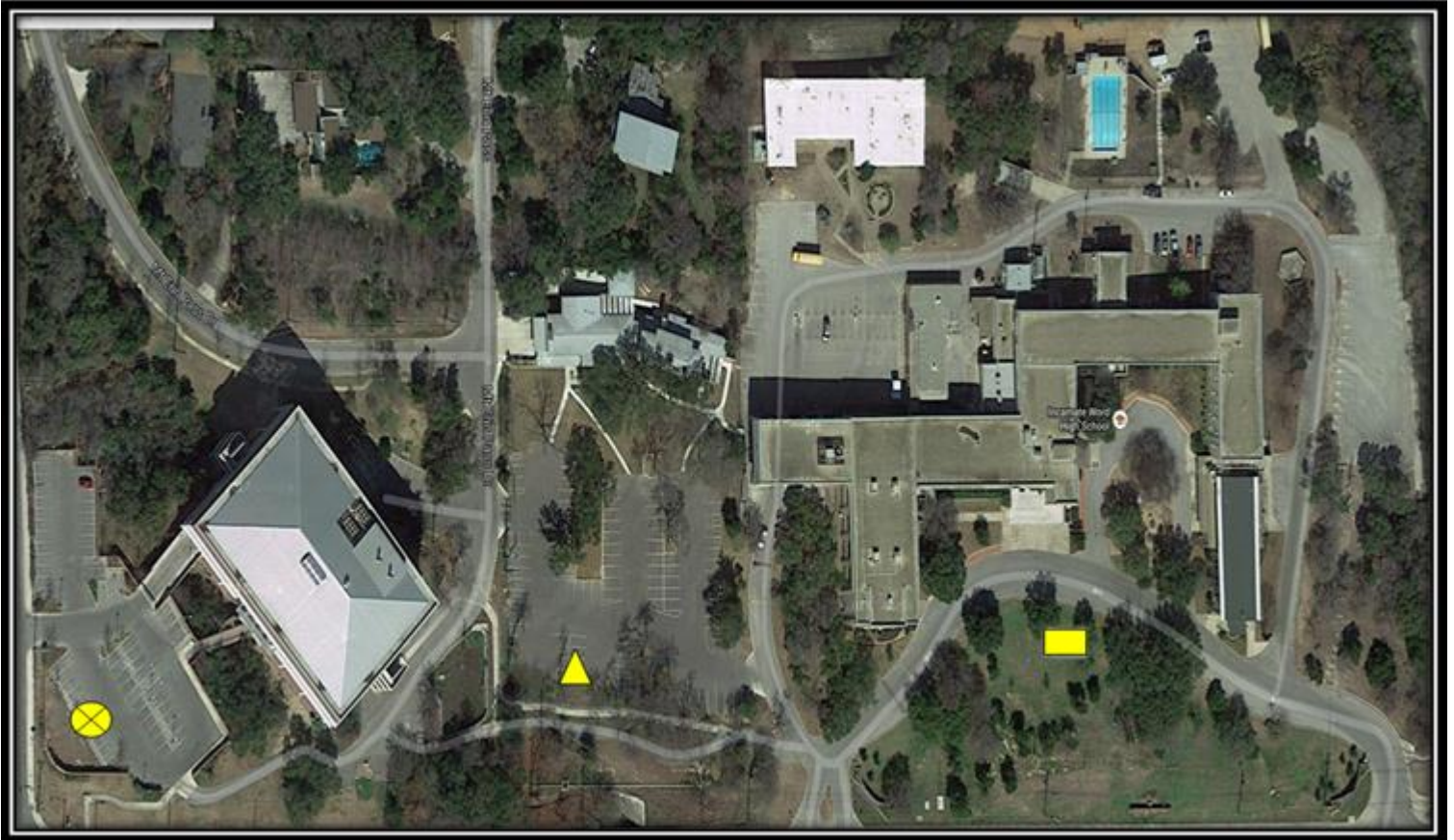
Shipping & Receiving, Carpenter Shop, Paint Shop ○


Benson Fieldhouse X


Sullivan Ceramic and Sculpture Studios ☆

Convocation and Natatorium ▲

WEST CAMPUS (ACROSS 281)



Feik School of Pharmacy 

McCracken House 

WATSON LOFTS



TOWNSHIP APARTMENTS



PHYSICAL THERAPY



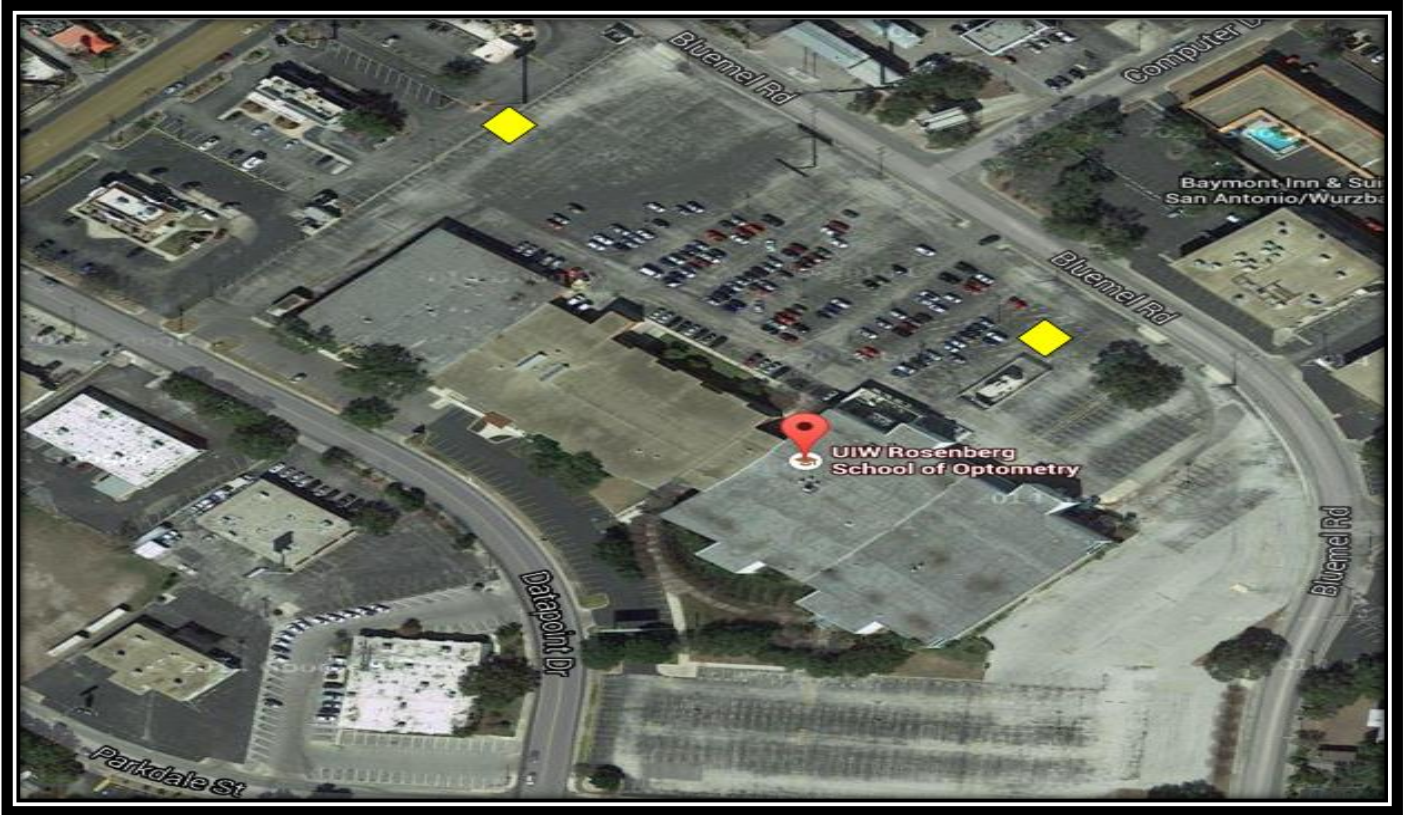
Physical Therapy ★


BOWDEN EASTSIDE CLINIC



Eastside Clinic X

OPTOMETRY



Rosenberg School of Optometry 

UIW SCHOOL OF MEDICINE CAMPUS



School of Medicine Campus

Building 1	▲
Building 2	⊘
Building 3	⊘
Building 4	■

FOUNDERS HALL

